

**CEILING HEIGHTS**

9'-0"  
8'-0"  
6'-8"

**FLOOR FOOTAGE**

845  
1281  
2126  
467  
104  
80

**WINDOW CODES**

WINDOW - CLEAR OPENING:  
EA 5.7 S.F., MIN HEIGHT 24"  
DTH 20", MAX. SILL HEIGHT = 44" A.F.F.

**SCHEDULE/CODES**

FAN FIXTURE

OUTLET R3901  
C.I. PER 2017 NEC CODE  
KITCHEN-BREAKFAST-DINING 20 AMP  
OTHER INTERIOR 15 AMP  
AND ALL EXTERIOR 20 AMP

ROOF OUTLET

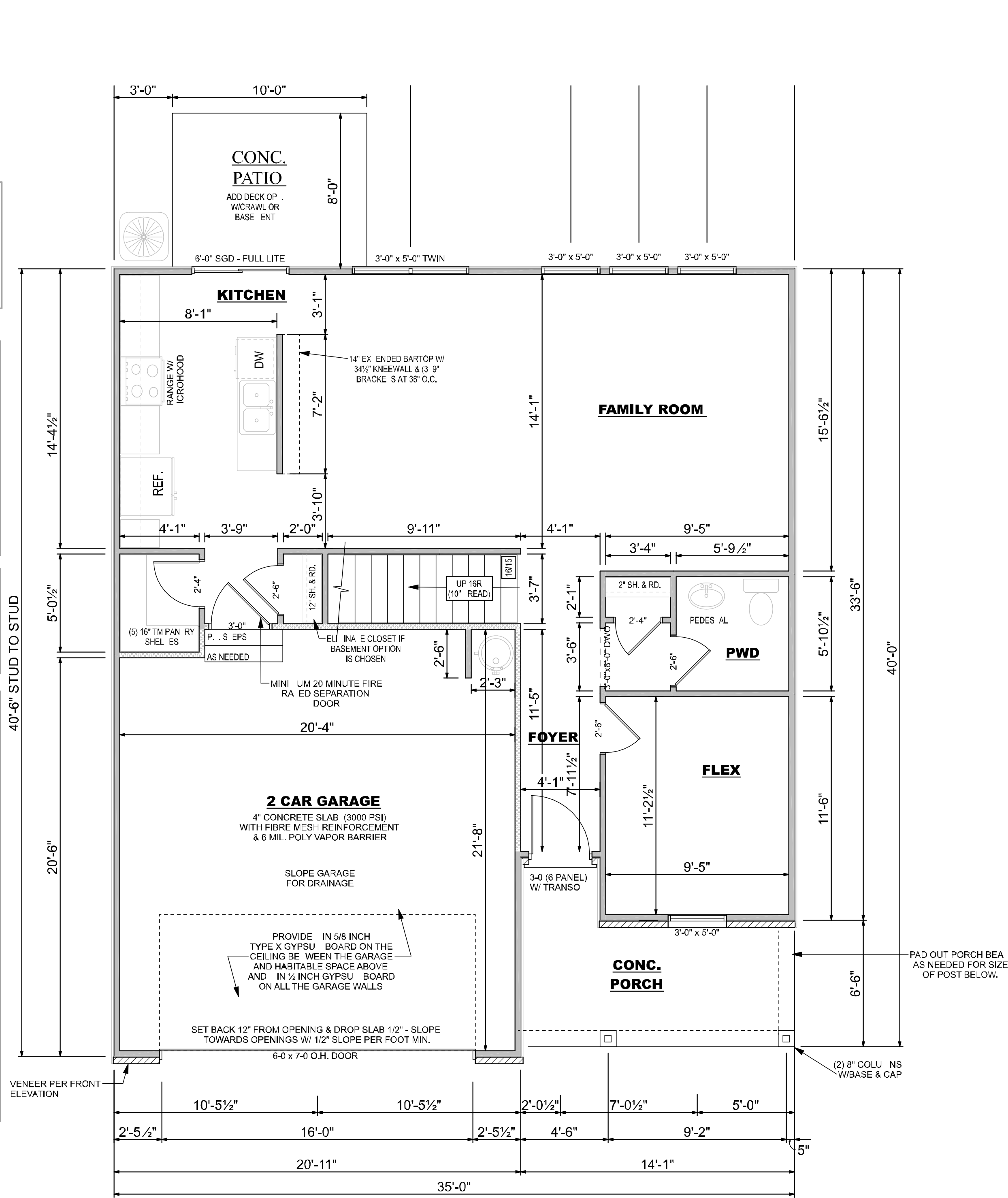
TOILET

WITCH

DETECTOR TO COMPLY WITH R314

DETECTOR TO COMPLY WITH R315

FAN REQUIRED TO COMPLY  
SECTION 303.3, EXCEPTION



18X24 PAPER SCALE 1/4" = 1'-0"

LEFT GARAGE

REV.	
DATE	

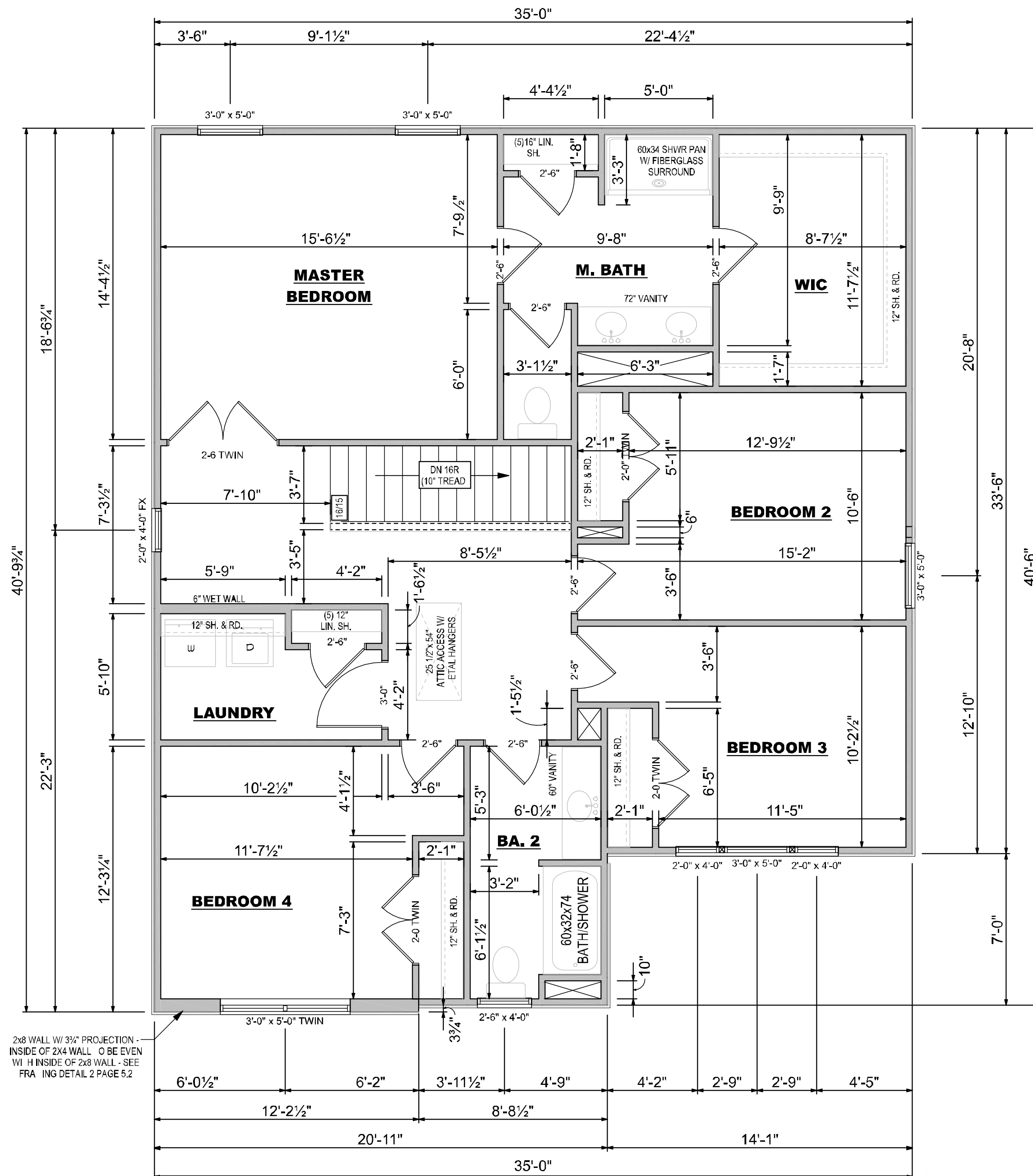
EMPIRE P M LLC.

THE AMBER  
FIRST FLOOR

DWG. BY:  
PWL/SAM

DATE:  
02-15-24

SHEET:  
3



18X24 PAPER SCALE 1/4" = 1'-0"

LEFT GARAGE

REV.	
DATE	

EMPIRE P M , LLC.

THE AMBER  
SECOND FLOOR

DWG. BY:  
PWL/SAM

DATE:  
02-15-24

SHEET:  
4